



## HELPFUL INFORMATION

It usually takes 1.5hrs to experience The MAD Museum. We have wheelchair access throughout, storage (albeit limited) and toilet facilities. Food and drinks are not permitted in the museum and we don't have lunch facilities. The closest coach drop-off is Windsor Street, a 2-minute walk from MAD. We regularly cater for SEND groups, please get in touch if you have any questions.



## CONTACT US

We are happy to talk through your specific requirements, please give us a call (Mon-Fri) or email us and we will be in touch shortly.

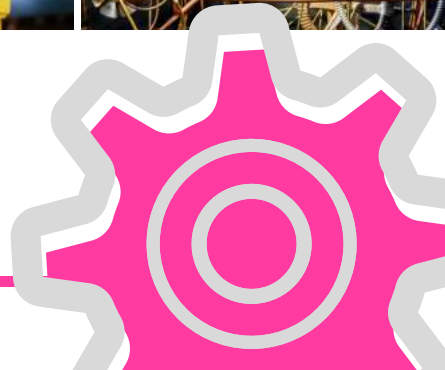
**Tel:** 01926 865839/01789 269356

**Email:** [bookings@themadmuseum.co.uk](mailto:bookings@themadmuseum.co.uk)

**Web:** [www.themadmuseum.co.uk](http://www.themadmuseum.co.uk)



*Photos by Chris Fossey.*



# HOME EDUCATION

INFORMATION FOR EDUCATORS



Henley Street, Stratford upon Avon, Warwickshire. CV37 6PT

Tel: 01926 865839

Email: [bookings@themadmuseum.co.uk](mailto:bookings@themadmuseum.co.uk)

Web: [www.themadmuseum.co.uk](http://www.themadmuseum.co.uk)



## THE MAD MUSEUM

In a nutshell, 'MAD' stands for Mechanical Art and Design. Located in the centre of Stratford upon Avon, this is the UK's only permanent Mechanical Art Museum. It mainly exhibits weird and wonderful contraptions but there are also bizarre illusions and 3D pieces of electronic MADness to interact with too.

## GROUP DISCOUNTS

Standard prices apply for home education families. Adult: £7.80. Concession/Student: £6.30. Child aged 6-15yrs: £5.20. Child aged 0-5yrs: free. Family (2 adults + 2 children 6-15yrs): £22.00. Extra Child with Family ticket: £3.50.

Discounts apply if you are bringing a group of more than 10 learners and if you pre-book. If so please refer to [www.themadmuseum.co.uk/groups](http://www.themadmuseum.co.uk/groups). Parents with SEN or disabled children are entitled to a concession ticket. Please get in touch if you have any questions.

## GET IN TOUCH

More information, testimonials from other home education organisers and MAD's risk assessment form!

We also offer joint discounted tickets - visit MAD + Stratford Butterfly Farm or MAD + Shakespeare's Schoolroom & Guildhall at a reduced rate. Get in touch to find out more.



## SKETCHING AND PHOTOGRAPHY

The MAD Museum is packed full of creativeness & design. We encourage classes to bring their sketch books, pencils, cameras and equipment. *Cost: Free.*



## TEACHING RESOURCES

Engaging lesson ideas, visit tips and interesting facts. Teaching resources for children aged 5-7yrs, 7-11yrs and 11-16yrs are available. These packs work alongside the activity packs mentioned below. If you would like this, please let us know in advance of your visit (at least 2 days before), and we can have the printed pack ready for you for when you arrive. *Cost: £2.00 per pack.*



## KS ACTIVITY PACKS

Activity packs for learners aged 5-7yrs, 7-11yrs and 11-16yrs are available. These packs coincide with the curriculum and contain questions about exhibits, design challenges and drawing activities. As with the Teacher Resources, please contact us beforehand if you would like these. *Cost: 50p printed (collected at MAD) or £0 electronic.*



## TAKE AWAY AUTOMATA KITS

In our gift shop, we provide a collection of educational items. If you are learning about cams, gears, levers or linkages, you might be interested in our Timbertech automata kits. Instructions and support materials are included. Both support Art, Design Technology and Engineering. For 5yrs+. *Cost: Both Linkages and Cam kits are £4.00 each.*

